

INFINITE
CONVERSATIONS
**ONE
COMMUNITY**

**NATIONAL
FORENSICS
ASSOCIATION**

2024 SPEECH
AND DEBATE
TOURNAMENT



CENTRAL MICHIGAN UNIVERSITY

TABLE OF CONTENTS



TOURNAMENT SCHEDULE	03
NFA HISTORY	05
LETTERS	07
HOTEL INFORMATION	15
NFA HOSTS	16
SCHOOLS PARTICIPATING	18
HALL OF FAME	20
PAST EVENT CHAMPIONS	24
NFA COUNCIL AND LD COMMITTEE	46
CAMPUS MAP	48

Thursday, April 18th

2:00 PM | Registration Begins
3:15 PM | Lincoln-Douglas Round 1
4:45 PM | Lincoln-Douglas Round 2
6:00 PM | Business Meeting/Student Meeting

Friday, April 19th

9:30 AM | Extemp Draw
10:00 AM | Flight C (EXT, POE, ADS) Round 1
11:30 AM | Flight D (DI, PER, POI) Round 1
1:30 PM | Flight A (DUO, RC) Round 1
1:30 PM | Lincoln-Douglas Round 3
3:00 PM | Flight B (PRO, INF, IMP) Round 1
4:30 PM | Flight A (DUO, RC) Round 2
4:30 PM | Lincoln-Douglas Round 4
5:30 PM | Extemp Draw
6:00 PM | Flight C (EXT, POE, ADS) Round 2

Saturday, April 20th

8:00 AM | Flight D (DI, PER, POI) Round 2
8:00 AM | Lincoln-Douglas Round 5
9:30 AM | Flight B (PRO, INF, IMP) Round 2
11:00 AM | Flight A (DUO, RC) Round 3
11:00 AM | Lincoln-Douglas Round 6
1:30 PM | Extemp Draw
2:00 PM | Flight C (EXT, POE, ADS) Round 3
3:30 PM | Flight D (DI, PER, POI) Round 3
3:30 PM | Triple Octas Lincoln-Douglas
5:00 PM | Flight B (PRO, INF, IMP) Round 3
6:30 PM | Flight A (DUO, RC) Octafinals
6:30 PM | Double Octafinals Lincoln-Douglas

TOURNAMENT SCHEDULE

All tournament schedule times are written in Eastern Time.

Sunday, April 21st

7:30 AM | Extemp Draw

8:00 AM | Octafinals Flight C

9:30 AM | Octafinals D, Octafinals LD

11:30 AM | Octafinals B

1:00 PM | Extemp Draw

1:30 PM | Quarterfinals (Pro, Ext, ADS, RC)

3:00 PM | Quarterfinals (Duo, DI, Poe, Imp)

4:30 PM | Quarterfinals (Pers, Info, POI),
Quarterfinals LD

Monday, April 22nd

7:30 AM | Extemp Draw

8:00 AM | Semifinals A+C

9:30 AM | Semis D+B, Semis LD

11:00 AM | Extemp Draw

11:30 PM | Finals A+C

1:00 PM | Lunch

2:00 PM | Finals D+B, Finals LD

4:30 PM | Awards

TOURNAMENT SCHEDULE

CONTINUED

NFA HISTORY

NEA HISTORY

In 1971, Dr. Seth Hawkins, concluding that the needs of the forensics community warranted a national individual events tournament, invented a national championship in individual events, declared it official by fiat and sent invitations. The tournament featured Prose, Poetry, Extemporaneous, Impromptu, After-Dinner Speaking, and Oratory. The tournament was attended by 23 schools, including George Mason University, Ball State University, Defiance College, Eastern Kentucky University, Eastern Michigan University, Evangel College, Georgetown College, Heidelberg College, University of Kentucky, Lehigh University, University of Southern Maine, University of Maryland, Miami University, Niagara University, Ohio University, Ohio Northern University, Purdue University, Sheperd University, Southern Connecticut State University, St. John's College, St. Rose College, West Chester University, and Wright State University.

In January 1973, a draft constitution for the National Forensic Association was written to create a governing body for the tournament. The constitution was accepted at the tournament, hosted by Eastern Michigan University, in April.



Since 1971, the growth of the organization we now know as NFA is evidence of the association's devoted mission of expanding and enhancing comprehensive collegiate education opportunities in speech communication nationwide. The NFA national tournament has been hosted every year since 1971 until 2020, when the Covid-19 pandemic forced the cancellation of the tournament to be hosted by the University of Wisconsin-Whitewater. In its place, the NFA council under the guidance of then President Karen Morris organized a virtual Performances of Distinction festival for graduating seniors and true novices to compete for a chance to have their work archived with national final round videos from previous years. This year, 2021, the NFA Championship Tournament returns for the 50th anniversary of the organization in a live virtual format

Despite the recent challenges forensics has encountered because of the pandemic, the activity remains strong, its coaches and students resilient, and the National Forensic Association continues its rich tradition of excellence in the forensics competition.

LETTER FROM TOURNAMENT COMMITTEE

Welcome National Forensics Tournament attendees!

The National Tournament Committee and our colleagues at Central Michigan and the city of Mt. Pleasant are pleased to welcome you to the 2024 National Forensics Association National Tournament, hosted by Central Michigan University. We are all excited to make sure that your tournament experience is an excellent one.

After four NFAs competing under the cloud and restrictions of the pandemic, it feels like we are finally able to fully reconnect as a community. And make no mistake, our speech communities – teams, alumni networks, regional associations and Nationals – helped sustain us and feel less alone during those uncertain days. But now, returning to the routine of tournament competition feels familiar and our community is re-finding and re-forming itself.

When the design team at Central Michigan proposed "One Community, Infinite Conversations" as the theme for the 2024 National Tournament, it felt completely perfect for where we are at, and where we are going. After a year of work, we are so excited to bring the NFA community to meet the vibrant, creative and giving community of Central Michigan University and Mt. Pleasant. Together, we will craft an incredible five days of competition.

Please join us in thanking Central Michigan for their hospitality and for the care they put into making this tournament a special experience for you all. We hope the improvements to the schedule, refined logistics and small touches you may notice throughout the week will make your team's attendance at the national tournament a unifying experience.

Sincerely,
The NFA Tournament Committee

David Bowers
Tournament Director

Megan Koch
President

Dawn Lowry
Vice President for
Tournament Administration



LETTER FROM CMU PRESIDENT



Office of the President

On behalf of Central Michigan University, it is my great pleasure to welcome you to our campus for the National Forensics Association's national championship tournament. We are thrilled to host such a talented and diverse group of students, and we look forward to witnessing your outstanding communication skills in action.

At CMU, we believe in empowering exceptional leaders and communicators who can articulate their ideas with clarity, conviction and empathy. The ability to communicate effectively is not only a valuable skill but also an essential tool for building meaningful relationships, fostering understanding and driving innovation.

As you prepare to take the stage and share your insights, stories and messages, please know that your voices truly matter. The impact of your words can resonate far beyond this competition, leaving a lasting impression on those who listen and inspiring others to find their own voices.

Once again, welcome to Central Michigan University. We wish you all the best as you compete in this enriching and rewarding experience. May your words echo with authenticity, purpose and inspiration.

Be well,

A handwritten signature in black ink, appearing to read "Bob Davies".

Bob Davies, Ph.D.
President
Central Michigan University

Phone (989) 774-3131 • Fax (989) 774-3665
Warriner Hall 106 • Central Michigan University • Mount Pleasant, Michigan 48859



LETTER FROM CMU PROVOST



February 28, 2024

Dear competitors, coaches, and guests,

On behalf of the students, faculty, and staff of Central Michigan University, it is my pleasure to warmly welcome you to our campus community. After a long history of participating in the National Forensic Association's National Championship Tournament, it is an honor to serve as the official host for the 2024 competition.

Congratulations to this year's participants; you should be proud of arriving on this national stage after an impressive 2023-2024 competitive speech and debate season. You exemplify excellence among collegiate communicators, and I commend you for your diligence and dedication that has led you to this moment.

I would also like to recognize the efforts of our faculty and staff in the School of Communication, Journalism & Media, our events teams, and the many other individuals who helped coordinate what will certainly be an exciting and memorable tournament experience.

Once again, welcome to the 2024 National Forensic Association's National Championship Tournament. I hope you enjoy your time on campus and in the greater Mount Pleasant community. To our competitors - I wish you all good luck as you embrace this challenge with confidence and creativity.

Warmly,

A handwritten signature in black ink, appearing to read "Nancy E. Mathews".

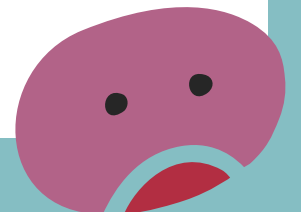
Nancy E. Mathews, Ph.D.
Provost and Executive Vice President

OFFICE OF THE PROVOST

112 Warriner Hall, Central Michigan University
Mount Pleasant, Michigan 48859

P 989.774.3931 | F 989.774.2042

<https://www.cmich.edu/about/university-leadership/office-provost>



LETTER FROM THE DEAN COLLEGE OF THE ARTS AND MEDIA



On behalf of the College of the Arts and Media at Central Michigan University, I would like to welcome you to our campus. It is a distinct honor and privilege to host the 2024 National Forensic Association's National Championship Tournament on our beautiful campus here in Mount Pleasant. It is important to the mission of our newly-formed School of Communication, Journalism, and Media to support events that bring attention to and celebrate excellence in our fields, and we are proud to be serving that mission here. Our faculty and students have been recognized by national and international organizations for the excellence of their work, their scholarship, and their service, and our graduates have used their education and experiences at CMU to earn positions and make a difference throughout the nation and world. Our collegiate motto is "We tell stories in a million ways", and we demonstrate this each and every week through the performances, scholarship, media work, and exhibitions of our faculty and students. While here, please take a moment to take in a recital in the School of Music, a performance by the University Theatre Dance Company, visit the Barstow Artist-in-residence exhibition at the University Art Gallery, or one of the many public events around campus.

We are excited to have you here, and we look forward to showing you what it means at CMU when we say, We Do.

Jefferson Campbell, D.M.A.
Dean, College of the Arts and Media
Central Michigan University

COLLEGE OF THE ARTS & MEDIA
Moore Hall 129, Central Michigan University
Mount Pleasant, Michigan 48859
P 989.774.1885
cam.cmich.edu

LETTER FROM THE GOVERNOR



April 18-22, 2024

Dear Friends,

On behalf of the state of Michigan, I'd like to extend my warmest greetings to everyone attending the 2024 National Forensic Association's National Championship Tournament.

The National Forensic Association's National Championship Tournament recognizes individuals who have exemplary talent in speech and debate competitions. I would like to extend my sincerest gratitude to Central Michigan University for hosting this event. This work is incredibly important to promote intercollegiate speech and debate activities across all colleges in Michigan and the country. May this conference provide a space for friendly competition and high-level speech and debate.

I would also like to extend my deepest recognition to all those involved in the planning and preparation of this conference. I have no doubt that this competition will continue to display the National Forensic Association's insight, talent, and devotion to education for students from across the country.

Again, welcome to the 2024 National Forensic Association's National Championship Tournament. Please accept my best wishes for an enjoyable and memorable competition.

Sincerely,

Gretchen Whitmer
Governor of Michigan



LETTER FROM UNITED STATES REPRESENTATIVE JOHN MOOLENAAR

LETTER FROM MT. PLEASANT MAYOR

JOHN R. MOOLENAAR
2ND DISTRICT, MICHIGAN

HOUSE COMMITTEE
ON APPROPRIATIONS
SUBCOMMITTEES ON

AGRICULTURE, RURAL DEVELOPMENT,
FOOD AND DRUG ADMINISTRATION, AND
RELATED AGENCIES

LABOR, HEALTH AND HUMAN SERVICES,
EDUCATION AND RELATED AGENCIES

FINANCIAL SERVICES AND GENERAL
GOVERNMENT

SELECT COMMITTEE ON

STRATEGIC COMPETITION BETWEEN THE
UNITED STATES AND THE CHINESE
COMMUNIST PARTY

Congress of the United States
House of Representatives
Washington, DC 20515-2204

WASHINGTON OFFICE:
246 CANNON HOUSE OFFICE BUILDING
WASHINGTON, DC 20515
(202) 225-3561
FAX: (202) 225-9679

CALEDONIA OFFICE:
8980 NORTH RODGERS COURT SE
SUITE H
CALEDONIA, MICHIGAN 49316
(616) 528-7100

CLARE OFFICE:
431 NORTH McEWAN STREET
CLARE, MICHIGAN 48617
(989) 802-6040

I would like to welcome you to the campus of Central Michigan University, the host to the National Forensic Association's (NFA) Championship Tournament. Congratulations on your achievements and your qualifications that bring you here today to participate in this most worthy debate and competitive speech competition.

This event serves as an opportunity to showcase your hard work and dedication amongst teams across the country. The educational experience you will all gain from the speech and debate activities is immeasurable.

As Congressman for Michigan's Second Congressional District, I applaud your determination and commitment. Again, congratulations and best wishes to you and all the participants involved in the NFA Championship Tournament.

Sincerely,


JOHN MOOLENAAR
Member of Congress

For up-to-date information on issues, events and other topics of interest, please sign up for my e-newsletter at www.moolenaar.house.gov.

PRINTED ON RECYCLED PAPER

City of Mt. Pleasant, Michigan

Mt. Pleasant
[meet here]

CITY HALL
320 W. Broadway • 48858
(989) 779-5300
(989) 773-4691 Fax

PUBLIC SAFETY
804 E. High • 48858
(989) 779-5100
(989) 773-4020 Fax

PUBLIC WORKS
320 W. Broadway • 48858
(989) 779-5400
(989) 772-6250 Fax

March 1, 2024


Hello! And Welcome to Mount Pleasant, the Home of Central Michigan University!

As the Mayor of the City of Mount Pleasant, Michigan, I extend a warm welcome as you gather for the National Forensic Championship tournament. The wealth of talent in speech and debate that you all bring to this tournament will be amazing. Education and the drive for excellence is what moves our nation forward!

I am pleased our beautiful City of Mount Pleasant has been chosen as the host city. And, as twice alum, I am proud that Central Michigan University is the venue (Fire Up!) I hope you have the opportunity to visit our beautiful parks, our wonderful downtown, and dine at some of our amazing restaurants. I am sure that your visit will be memorable and enjoyable.

Enjoy your stay, do well, and be sure to come back and visit us soon!

With warmest regards,


Amy Perschbacher, LPC, NCC, ACS
Mayor of the City of Mount Pleasant, Michigan

Website: www.mt-pleasant.org
Michigan Relay Center for Speech & Hearing Impaired: 711

CAMPUS DINING INFORMATION

Forensics

**APRIL 18-22
DINING INFORMATION**

CENTRAL EATS

shake smart



IDLI DOSA
Indian Restaurant

WHICH WICH?
SUPERIOR SANDWICHES

\$11.50 Boxed Lunches
Wicked, Turkey, Ham, Chicken,
Avocado, Grinder, Club, Roast
Beef, Buffalo Chicken, Tuna
Salad, Caprese
Order ahead, contact Tim
at kanis1tj@cmich.edu



Transact Mobile Ordering
Download the app to order
from any of these locations!



HOURS OF OPERATIONS



dineoncampus.com/cmichdining



HOTEL INFORMATION

We are working closely with the Mt. Pleasant Convention and Visitors Bureau to provide information to simplify your trip. This beautiful area features fantastic locally owned businesses who will make your visit special! You can find information and maps at their website: www.meetmtp.com

We have booked blocks at the following hotels. Please book your rooms early – we are hearing there are other sports tournaments in Mt. Pleasant that weekend.

Holiday Inn – \$139/ night 2 Queen beds per room; Breakfast NOT included.
Book by 3/25/2024.

Hampton Inn – \$129/night 2 Queen beds per room: Breakfast and wifi included. Book by 3/11/2024.

Days Inn – \$89/night (Wed, Thurs, Sun, Mon) & \$119/night (Fri,- Sat); 2 Queen beds per room; Breakfast and wifi included.
Book by 4/4/2024 Call 989-772-1001 Group code NFAN2024.

Super 8 – \$79/night (Wed, Thurs, Sun, Mon) & \$109/night (Fri,- Sat); 2 Queen beds per room; Breakfast and wifi included.
Book by 4/4/2024 Call 989-773-8888 Group code NFAN2024.

NFA HOSTS



Central Michigan University	2024	Bradley University
Illinois State University	2023	NFA Council (Virtual Tournament)
University of Wisconsin-Whitewater	2022	Santa Ana, California
University of Wisconsin-Oshkosh	2021	University of Wisconsin-Eau Claire
Ball State University	2020	Ohio University
Eastern Michigan University	2019	Marshall University
Ohio University	2018	Illinois State University
Ohio University	2017	Missouri State University & Drury University
Ohio University	2016	Berry College
Eastern Michigan University	2015	University of Akron
Ohio University	2014	Ball State University
Ohio University	2013	Western Kentucky University
Ohio University	2012	Eastern Michigan University
Ohio University	2011	Western Illinois University
Ohio University	2010	Western Kentucky University
Tennessee State University	2009	Mankato State University
University of Wisconsin-Eau Claire	2008	Mankato State University
Western Illinois University	2007	Arizona State University
Berry College	2006	Bloomsburg College
Ohio University	2005	Georgia State University
Western Illinois University	2004	Ohio State University
Berry College	2003	University of Montevallo
Ohio University	2002	Monmouth University
Western Illinois University	2001	California State University-Los Angeles
Ball State University	2000	Plattsburg State University
Eastern Michigan University	1999	Ohio Northern University
Bloomsburg State University	1998	Ohio Northern University
Marshall University	1997	Ohio Northern University
Upsala College	1996	
Mankato State University	1995	
Marshall University	1994	
Illinois State University	1993	
Western Kentucky University	1992	
Western Kentucky University	1991	
Illinois State University	1990	
Western Kentucky University	1989	
Western Kentucky University	1988	
Western Kentucky University	1987	
Western Kentucky University	1986	
Western Kentucky University	1985	
Western Kentucky University	1984	
Western Kentucky University	1983	
Western Kentucky University	1982	
Western Kentucky University	1981	
Western Kentucky University	1980	
Western Kentucky University	1979	
Western Kentucky University	1978	
Western Kentucky University	1977	
Western Kentucky University	1976	
Western Kentucky University	1975	
Western Kentucky University	1974	
Western Kentucky University	1973	
Western Kentucky University	1972	
Western Kentucky University	1971	

1971-2024

SCHOOLS PARTICIPATING

Arizona State University
Ball State University
Bradley University
California State University Chico
California State University, Fullerton
California State University, Sacramento
Cedarville University
Central Michigan University
Concordia University Irvine
Cornell University
DePaul University
Eastern Michigan University
Ferris State University
Florida State University
Grand Canyon University

George Mason University
Hofstra University
Illinois College
Illinois State University
John Carroll University
Kansas City KS Community College
Lafayette College
Lewis & Clark College
Marshall University
McNeese State University
Minnesota State University, Mankato
Missouri State University
Moraine Valley
North Central College
North Dakota State University

University of Illinois at Chicago
University of Illinois at Urbana-Champaign
University of Minnesota
University of Nebraska-Lincoln
University of Nevada, Las Vegas
University of North Texas
University of Northern Iowa
University of Pittsburgh
University of Texas at Austin
University of the Pacific
University of Utah
University of Wisconsin-Eau Claire
University of Wisconsin-Madison
Washburn University
Wayne State College
Wayne State University
Western Kentucky University

Northwestern University
Oakton Community College
Ohio University
Pacific University
Penn State University
Rice University
Saginaw Valley State University
San Joaquin Delta
San Jose State University
Simpson College
Tennessee State University
Texas State University
Truman State University
University of Akron
University of Alabama
University of Central Missouri

HALL OF FAME

The Hall of Fame honors those students that made an impact while competing in forensics and continued to make an impact after leaving the activity. Areas to consider are: forensics competitive excellence, forensics community citizenship, and forensics ambassadorship.

1970 - 1975

David Beal | Ohio University
Greg Denaro | Southern Connecticut University
Jim Molnar | Ohio University
Judy Sturgis Hill | Eastern Michigan University
Danny Vice | Eastern Michigan University
Keith Semmel | Mansfield State University
Paul Van Dyne | Pennsylvania State University
Simone "Skip" Kincaid | Glenville State College

1976 - 1980

John Capecci | Eastern Michigan University
Michael Garcia | Eastern Michigan University
Theresa McElwee | Eastern Michigan University
Donald Smith | Southern Connecticut University
Elighie Wilson | Ball State University
William Allen Young | University of Southern California
Nancy Cartwright | Ohio University
Mark Hickman | Marshall University
Chris Reynolds | Bowling Green State University/
Ohio University
Kenda Creasy Dean | Miami University
Ray Quiel | Eastern Michigan University
Margaret Langford George | Mason University

1981 - 1985

Marco Benassi | Bradley University
Greg Dolph | Bradley University
Sam Marcossan | Bradley University
J.G. Harrington | Rutgers University
Tom Doyle | Bradley University
Mitchell "Bucky" Fay | University of Wisconsin-
Eau Claire
Andrew Heaton | Bradley University

1986 - 1990

David Bickford | Brown University
Liesel Reinhart | University of Colorado
Sarah Braun | Bradley University
Cam Jones | Cornell University
Stephanie Kaplan | University of Wisconsin-
Madison
Kim Roe | Eastern Michigan University
Celeste Matheson | Illinois State University
Penny G. O'Connor | University of Northern
Iowa
Joel Schwartzberg | Emerson College
Ken Klawitter | Bradley University
Jeff Seasholtz | Eastern Michigan University
Tom Zeidler Adamson | Illinois State
University

1991 - 1995

Jason Berke | Illinois State University
Rita Rahoi | University of Wisconsin-Eau
Claire
Michael Malloy | St. Joseph's University
Andy Wood | Berry College
Adam Black | Western Kentucky
University
Karon Bowers | Bradley University
George LaMaster | Bradley University
Kevin Minch | Wayne State University
Patrick O'Shaughnessy | Bradley
University
Stacy Nekula | Illinois State University
Mona Dworzak | Illinois State University
Andrew Billings | Indiana University
Jeff Archibald | Cornell University
Amy Darnell | Moorehead State University

1986 - 1990

David Bickford | Brown University
Liesel Reinhart | University of Colorado
Sarah Braun | Bradley University
Cam Jones | Cornell University
Stephanie Kaplan | University of Wisconsin-
Madison
Kim Roe | Eastern Michigan University
Celeste Matheson | Illinois State University
Penny G. O'Connor | University of Northern Iowa
Joel Schwartzberg | Emerson College
Ken Klawitter | Bradley University
Jeff Seasholtz | Eastern Michigan University
Tom Zeidler Adamson | Illinois State University
Sarah Meinen Jedd | Bradley University
Jamie Riewerts | Bradley University
Will Koch | Illinois State University
Justin Zabor | Ohio University
Kelly (Lloyd) Adreani | Eastern Michigan University
Ryan Hershberger | Eastern Michigan University
John Boyer | Otterbein College
Jim Dobson | Northern Arizona University
Shane Mecham | Truman State University
Richard Besel | North Central College
Heidi Sulzman | Arizona State University
Nelsan Ellis | Illinois State University
Marianne LeGreco | Bradley University

2001 - 2005

Aaron Unseth | University of Wisconsin-Eau
Claire
John Coleman | Berry College
Robert Barnhart | Ohio University
Erin Gallagher Barnhart | Ohio University
Bryan McCann | Illinois State University

Robb Telfer | Illinois State University
Shannon Maney | Illinois State University
Matthew Collie | Minnesota State University, Mankato
Eric Long | Bradley University
Amber (Neuenschwander) Price | Eastern Michigan
University
Nina Brennan | Eastern Michigan University
Ken Young | Bradley University
AJ Moorehead | Arizona State University
Alison Fisher Bodkin | Bradley University
Benjamin Jedd | Bradley University
Vance Pierce | Bradley University
Tomeka Robinson | McNeese State University
Meredith Smith | Miami University
Paul Porter | Ball State University
Robert Imbody | Ohio University

2006 - 2010

Robert Cannon | Glendale Community College
Annie Kincade | Illinois State University
Dillon White | Northwestern University
Angie Dunk | Illinois State University
Carrie Guggenmos | Western Kentucky University
Richard Brophy | Eastern Michigan University
Stan Polit | Northwestern University

2011 - 2015

Ryan Cashman | Illinois State University
Maureen Brothman | Illinois State University



LARRY SCHNOOR PRESIDENT'S AWARD

2002

Eddie Myers | University of West Florida

2015

Larry Schnoor | Minnesota State University, Mankato

2011

Dennis Beagan | Eastern Michigan University

2016

Randy Richardson | Berry College

2014

Michael Dreher | Bethel University



George Armstrong | Bradley University

Bill Henderson | University of Northern Iowa

I.E. Listserv | Cornell University

Vicki Karns | Suffolk University

Margaret Greynolds | Georgetown College

Michael P. Kelley | California State University-Los Angeles

Ed Harris | Suffolk University

Michael Leiboff | Mansfield State University

Seth Hawkins | Southern Connecticut University

Al Montanaro | Plattsburgh State University

Larry Schnoor | Minnesota State University, Mankato

Chris Reynolds | University of Wisconsin-Eau Claire/Otterbein College

Michael Tew | Eastern Michigan University

Al Montanaro | Plattsburgh State University

Walter Stump | University of Southern Maine

Robbi Rowe | Stetson University

EDDIE MYERS AWARD

2004

Randy Richardson | Berry College

2005

Ray Quiel | Eastern Michigan University

2005

Harry Strine | Bloomsburg University

2006

Mark Hickman | West Chest University

2006

Ed Hinck | Central Michigan University

2006

Karen Morris | University of Wisconsin-Eau Claire

2008

Susan Millsap | Otterbein College

2008

Dan Smith | Bradley University

2008

Bruce Wickelgren | Suffolk University

2009

Richard Paine | North Central College

2009

Dave Trumble | St. Anselm's College

2011

Kelly Larson | Missouri Southern College

2013

Brendan Kelly | University of West Florida

2013

George LaMaster | Marian University

2014

Audrey Cunningham | University of Indianapolis

2015

Mary Birkholt | Creighton University

2016

Marlin Bates | University of the Pacific

2019

Leah White | Minnesota State University, Mankato

2020

Nicole Freeman | University of Central Missouri

2023

Jennifer Talbert | Ohio University

DISTINGUISHED SERVICE AWARD

PAST CHAMPIONS

- 2023** Gursimrat Dahry | University of Minnesota
- 2022** Aaron Lutz | Lewis and Clark College
- 2021** Jacob Thompson | George Mason University
- 2019** Jordan Auzenne | University of Texas at Austin
- 2018** Annie Schuver | Bradley University
- 2017** Kohinoor Gill | Arizona State University
- 2016** Jerome Gregory | Bradley University
- 2015** Paige Settles | Western Kentucky University
- 2014** Patrick Seick | Eastern Michigan University
- 2013** Andrew Neylon | Ball State University
- 2012** Joshua Hiew | Northwestern University
- 2011** Shira DeCovnick | Northwestern University
- 2010** Todd Rainey | Western Kentucky University
- 2009** Meredith Regan | University of Texas at Austin
- 2008** Jessica Furgerson | Western Kentucky University
- 2007** Joelle Perry | Western Kentucky University
- 2006** Saeed Jones | Western Kentucky University
- 2005** Antonio Moorehead | Arizona State University
- 2004** Allison Rank | Miami University
- 2003** Rob Barnhart | Ohio University
- 2002** Rob Barnhart | Ohio University
- 2001** Bryan McCann | Ohio University
- 2000** Nathan Mather | Northwestern
- 1999** Chris Kristofco | St. Joseph's University
- 1998** Chris Kristofco | St. Joseph's University
- 1997** Mike Thompson | Miami University
- 1996** Paul Higday | University of Pennsylvania
- 1995** Jeff Archibald | Cornell University



IMPROMPTU SPEAKING

- Kevin Minch- Wayne State University **1994**
- Eric Martin- Bradley University **1993**
- Ronnie Stewart- Bradley University **1992**
- Nick Fynn- Ohio University **1991**
- Ed Wisniowski- Illinois State University **1990**
- Cam Jones- Cornell University **1989**
- Cam Jones- Cornell University **1988**
- Scott Wilson- University of Minnesota **1987**
- Mitchell Fay- University of Wisconsin-Eau Claire **1986**
- Michell Patrick- LaSalle University **1985**
- David Alabach- Bradley University **1984**
- Sam Marcossou- Bradley University **1983**
- Tom McCarthy- Bradley University **1982**
- Mary Foersch- University of Virginia **1981**
- Justin Hughes- Oberlin College **1980**
- George Denger- Eastern Michigan University **1979**
- William Young- University of California **1978**
- Butch Maltby- Wheaton College **1977**
- Alberto Coll- Princeton University **1976**
- Jan Marrow- California State University **1975**
- Alberto Coll- Princeton University **1974**
- Jerry Bluhm- Eastern Michigan University **1973**
- Michael Muth- Ohio University **1972**
- Lisa Uhrig- Ball State University **1971**

2023	Gustavo Lanz – George Mason University
2022	Aaron Lutz – Lewis and Clark College
2021	Maleeha Rasheed – University of Illinois Chicago
2019	Aaron Lutz- Lewis & Clark College
2018	Arel Rende- University of Texas at Austin
2017	Arel Rende- University of Texas at Austin
2016	Farrah Bara- University of Texas at Austin
2015	Farrah Bara- University of Texas at Austin
2014	Carolyn Evans- Western Kentucky University
2013	Alexis Elliott- Western Kentucky University
2012	Joshua Hiew- Northwestern University
2011	Joshua Hiew- Northwestern University
2010	Seth Peckham- Western Kentucky University
2009	Austin Wright- University of Texas at Austin
2008	Merry Regan- University of Texas at Austin
2007	Jill Collum- University of Texas at Austin
2006	Liz Coleman- New York University
2005	John Geibel- St. Joseph’s University
2004	Michael Chen- Seton Hall University
2003	Jason Warren- Northwestern University
2002	Rob Barnhart- Ohio University
2001	Matt Ross- Ohio University
2000	Greg Lipper- Northwestern University
1999	Chris Kristofco- St. Joseph’s University
1998	Colin O’Brien- Ohio State University



EXTEMPORANEOUS SPEAKING



EXTEMPORANEOUS SPEAKING



Brian Cooper- University of Colorado -Boulder	1997
Ted Scutti- University of Southern Colorado	1996
Paul Higday- University of Pennsylvania	1995
Tom Costigan- Illinois State University	1994
Patrick O’Shaughnessy- Bradley University	1993
Patrick O’Shaughnessy- Bradley University	1992
Nick Fynn- Ohio University	1991
Kimberly Fisher- Arizona State University	1990
Mike Jacoby- Bradley University	1989
Mike Jacoby- Bradley University	1988
David Bickford- Brown University	1987
David Bickford- Brown University	1986
David Bickford- Brown University	1985
Michael Paton- Ohio State University	1984
Roger Aden- University of Nebraska-Lincoln	1983
Kate Joeckel- University of Nebraska-Lincoln	1982
Andy Heaton- Bradley University	1981
Sean Aiken- St. Olaf College	1980
George Denger- Eastern Michigan University	1979
Steve Walton- Kansas State University	1978
Butch Maltby- Wheaton College	1977
Kevin Brady- Princeton University	1976
Don Rice- Ohio University	1975
Alberto Coll- Princeton University	1974
Jerry Bluhm- Eastern Michigan University	1973
Fred Schmidt- Georgetown University	1972
Rob Frazier- Lehigh University	1971

2023	Cecilia Alali – Western Kentucky University
2022	Simran Chugani – University of Minnesota
2021	Terrence Mayfield – Illinois State University
2019	Larranz Guider- University of Minnesota
2018	Abigail Onwunali- University of Texas at Austin
2017	Megan Magee- Bradley University
2016	Abigail Onwunali- University of Texas at Austin
2015	Sebastian Orozco- Western Kentucky University
2014	Lindsey White- Western Kentucky University
2013	Tyler Rife- Western Kentucky University
2012	Cecil Blutcher- Bradley University
2011	Chelsea Harman- Western Kentucky University
2010	Dan Glaser- Ohio University
2009	Joele Denis- Western Kentucky University
2008	Clarence Ball- Tennessee State University
2007	Kashif Powell- Morehouse University
2006	Paul Davis- Arizona State University
2005	Antonio Moorehead- Arizona State University
2004	David Montgomerie- Illinois State University
2003	Antonio Moorehead- Arizona State University
2002	Joshua Green- Miami University
2001	Joshua Green- Miami University
2000	Khadeejah Johnson- Arizona State University
1999	Robert Milz- Northern Arizona University
1998	Heidi Sulzman- Arizona State University
1997	Latonya Mason- Eastern Michigan University
1996	Kevin Rolston- St. Joseph’s University

POETRY INTERPRETATION

Heidi Sulzman- Arizona State University	1995
David Kneebone- Indiana University	1994
Michael Malloy- St. Joseph’s University	1993
Antoine McKay- Eastern Michigan University	1992
William Coelius- Eastern Michigan University	1991
Sarah Braun- Bradley University	1990
Sarah Braun- Bradley University	1989
Liesel Reinhart- University of Colorado	1988
Laura Duncan- Eastern Michigan University	1987
Kathy Kasdorf- Illinois State University	1986
Greg Dolph- Bradley University	1985
Lisa Philips- Ohio State University	1984
John Allen- Illinois State University	1983
Cindy Rieke- Illinois State University	1982
Carolyn Mungo- Bradley University	1981
Laura Gordon- Clarion University	1980
Pam Wallace- Eastern Michigan University	1979
William Young- University of Southern California	1978
Michael Garcia- Eastern Michigan University	1977
Sandra Tett- Northern Michigan University	1976
Mary Stout- Marshall University	1975
Darrell Pop- Heidelberg College	1974
Michelle Morris- University of Montevallo	1973
David Beal- Ohio University	1972
Jim Molnar- Ohio University	1971



2023	Fernando Cereceres – University of Texas at Austin
2022	Valeria Najera – University of Texas at Austin
2021	Kimberly Lee – University of Texas at Austin
2019	Alli Kennon- Hastings College
2018	Abigail Onwunali- University of Texas at Austin
2017	Abigail Onwunali- University of Texas at Austin
2016	Abigail Onwunali- University of Texas at Austin
2015	Karen Bagoumian- Eastern Michigan University
2014	Elle Pratt- Western Kentucky University
2013	Brooke Stevenson- Bradley University
2012	Camille Yameen- Bradley University
2011	Jasmine McLeod- California State University-Long Beach
2010	Chris Fowler- Creighton University
2009	Amanda Samoyloff- California State University-Long Beach
2008	Adam Sharples- Bradley University
2007	Chris Griesinger- Eastern Michigan University
2006	Lacy Lowrey- Bradley University
2005	Scott Pyle- Bradley University
2004	Jacob Hodgson- Eastern Michigan University
2003	Mike Slefinger- Illinois State University
2002	Joshua Green- Miami University
2001	Joe O’Brien- St. Joseph’s University
2000	Robert Pieranunzi- Indiana University
1999	Robert Pieranunzi- Indiana University
1998	Jill McCall- Bradley University
1997	Heidi Sulzman- Arizona State University

PROSE INTERPRETATION

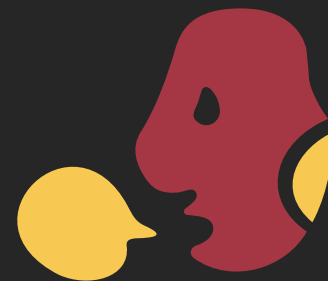


James Dobson- Northern Arizona University	1996
Ed Reed- Bradley University	1995
Laial Dahr- Eastern Michigan University	1994
Jason Davidson- Bradley University	1993
William Coelius- Eastern Michigan University	1992
Amy Olsen- Bradley University	1991
Jean Lamarra- Brooklyn College	1990
Robert Adanto- Arizona State University	1989
Todd Tesen- Eastern Michigan University	1988
Debbie Belskie- Ohio University	1987
Greg Dolph- Bradley University	1986
Tony Maull- George Mason University	1985
Tim Clue- Bradley University	1984
Bobbye Perrin- Eastern Michigan University	1983
Cindy Rieke- Illinois State University	1982
Roland Spies- Illinois State University	1981
Morty Ross- Clark College	1980
Michael Garcia- Eastern Michigan University	1979
Mark Ferguson- Bowling Green University	1978
Michael Garcia- Eastern Michigan University	1977
Roscoe C. Burkes- Northern Illinois University	1976
Carol Pounder- Ithaca College	1975
Judy Blackwell- Albion College	1974
Darrell Pope- Heidelberg College	1973
Jim Molnar- Ohio University	1972
Jim Molnar- Ohio University	1971

PERSUASIVE SPEAKING

2023	Krystal Perez – University of Texas at Austin
2022	Evan Ortiz – University of Texas at Austin
2021	Osade Imalele – Eastern Michigan University
2019	Andrea Ambam- Western Kentucky University
2018	Kate Rich- Illinois State University
2017	Jerome Gregory- Bradley University
2016	Farrah Bara- University of Texas at Austin
2015	Sydney Machesky- Wayne State University
2014	Nick Gilyard- Western Kentucky University
2013	Jacoby Cochran- Bradley University
2012	William Igbokwe- University of Texas at Austin
2011	Jacoby Cochran- Bradley University
2010	Patrick Campbell- Bradley University
2009	Austin Wright- University of Texas at Austin
2008	Jessy Ohl- Kansas State University
2007	Chris Griesinger- Eastern Michigan University
2006	Chris Brasfield- Western Kentucky University
2005	Jonathan Carter- Northwestern University
2004	Kelly Bender- University of Wisconsin-Eau Claire
2003	Ben Schneider- University of Wisconsin-Eau Claire
2002	Chris Lahna- Miami University
2001	Steve Zammit- Cornell University
2000	Dan Hungerman- Miami University
1999	Amanda Hickman- Miami University
1998	Christine Smith- Bradley University
1997	Chris Grove- Illinois State University

Shawn Harris- University of Wisconsin-Eau Claire	1996
Jayme Wilson- Eastern Michigan University	1995
Andy Wood- Berry College	1994
George LaMaster- Bradley University	1993
Todd Prins- University of Northern Iowa	1992
Athena Papachronis- Bradley University	1991
Stephanie Kaplan- University of Wisconsin-Madison	1990
Betsy Hefferman- University of Wisconsin-Madison	1989
Brenda Dempsey- Eastern Michigan University	1988
Jane Moreland- Illinois State University	1987
Kay Hriensaitong - Bradley University	1986
John Broer- Miami University	1985
Inta Lasis- George Mason University	1984
Michael Jones- Eastern Michigan University	1983
Dennis Upah- Bradley University	1982
Annemarie Mungo- Eastern Michigan University	1981
Sean O'Rourke- Humboldt State University	1980
George Denger- Eastern Michigan University	1979
John Rodden- LaSalle University	1978
Ruth Brenner- University of Wisconsin-Eau Claire	1977
Mohammad- Los Angeles Valley College	1976
Sue Sciame- Ball State University	1975
Joe Matthews- Defiance College	1974
Barry Ybrra- California Lutheran	1973
Mark Graff- Ohio Northern University	1972
Ruth Brisbain- Defiance College	1971



2023	Tani Washington – Western Kentucky University
2022	Tani Washington – Western Kentucky University
2021	Atta Gould – George Mason University
2019	Ally Knighton- Lewis & Clark College
2018	Suchinder Kalyan- University of Texas at Austin
2017	Derrek Chung- University of Texas at Austin
2016	Kevin King- University of Texas at Austin
2015	Kevin King- University of Texas at Austin
2014	Adam Rayzor- Bradley University
2013	Ryan Tinlin- Bradley University
2012	Tyler Dailey- Western Kentucky University
2011	Blake Longfellow- Bradley University
2010	Dillon White- Northwestern University
2009	Robert Cannon- Glendale Community College
2008	Jessy Ohl- Kansas State University
2007	Kashif Powell- Morehouse College
2006	Kyle Schultz- Illinois State University
2005	Lydia Nelson- Western Kentucky Univ/
2004	Caleb Williams- Western Kentucky University
2003	Annalisa Esposito- Eastern Michigan University
2002	Meredith Schnug- Miami University
2001	Martine Note- Bradley University
2000	Will Koch- Illinois State University
1999	Will Major- Illinois State University
1998	Ann Hackel- University of Wisconsin-Eau Claire

INFORMATIVE SPEAKING



Ryan Hershberger- Eastern Michigan University	1997
Mona Dworsack- Illinois State University	1996
Bob Moore- Illinois State University	1995
Ed Reed- Bradley University	1994
Ed Reed- Bradley University	1993
Brian Gardner- Morehead State University	1992
Tony Brooks- Bradley University	1991
Stephanie Kaplan- University of Wisconsin-Madison	1990
Joey Callow- Miami University	1989
Brenda Dempsey- Eastern Michigan University	1988
Theresa Buescher- Illinois State University	1987
Brian Welch- Bradley University	1986
Brenda Dempsey- Eastern Michigan University	1985
Bobbye Perrin- Eastern Michigan University	1984
Rachel Holloway- Morehead State University	1983
Rachel Holloway- Morehead State University	1982
Jon Capecci- Eastern Michigan University	1981
Kenda Creasy- Miami University	1980
Christina Reynolds- Ohio University	1979
William Young- University of California	1978
Michael Garcia- Eastern Michigan University	1977
Irene Ziegler- Stetson University	1976
Joey Golden- Eastern Michigan University	1975
Giselle Quiqley- West Chester University	1974

2023	Doniven Hill-Bush – Illinois State University
2022	Auryon Azar – Eastern Michigan University
2021	Haleemah Na'Allah – Bradley University
2019	Andrea Ambam- Western Kentucky University
2018	Seis Steves- University of Texas at Austin
2017	Andrea Ambam- Western Kentucky University
2016	Sami White- Eastern Michigan University
2015	Berkley Conner- Ball State University
2014	Patrick Seick- Eastern Michigan University
2013	Brooke Stevenson- Bradley University
2012	Ryan Cashman- Illinois State University
2011	Ryan Cashman- Illinois State University
2010	Joe Cozza- Illinois State University
2009	Michael Norris- Illinois State University
2008	Emily Hopper- University of Alabama
2007	Chris Griesinger- Eastern Michigan University
2006	Annie Kincade- Illinois State University
2005	Richard Yu- Clemson University
2004	Shannon Maney- Illinois State University
2003	Robb Telfer- Illinois State University
2002	Robb Telfer- Illinois State University
2001	Kami Kosenko- Bradley University
2000	Amber Price- Eastern Michigan University
1999	Dana Lovecchio- Bradley University
1998	Brendan Kelly- Eastern Michigan University
1997	David Lindrum- Berry College
1996	Ben Lohman- Bradley University

AFTER DINNER SPEAKING

Leigh Stickler- Indiana University	1995
Calvin Fong- Bradley University	1994
Trace Milan- Arizona State University	1993
Steve Futterman- Miami University	1992
Jeff Seasholtz- Eastern Michigan University	1991
Joel Schwartzberg- Emerson College	1990
Jeff Sculley- Bradley University	1989
Kim Roe- Eastern Michigan University	1988
Kim Roe- Eastern Michigan University	1987
Kim Roe- Eastern Michigan University	1986
Melissa Dean- Miami University	1985
Tim Muelhoff- Miami University	1984
Martha Ford- Ohio State University	1983
Mike Bailey- Eastern Michigan University	1982
Jon Capecci- Eastern Michigan University	1981
Jon Capecci- Eastern Michigan University	1980
Ric Roe- Ohio State University	1979
Connie Day- Marshall University	1978
Jerry Neil- University of Tennessee	1977
Mark Hickman- Glenville State University	1976
Randy Miller- Elizabethtown University	1975
Darryl Dean- Eastern Michigan University	1974
David Beal- Ohio University	1973
Judy Sturgis- Eastern Michigan University	1972
Cathie Craig- Georgetown College	1971



AFTER DINNER SPEAKING

RHETORICAL CRITICISM

2023	Tani Washington – Western Kentucky University
2022	Tani Washington – Western Kentucky University
2021	Derek Collins – Western Kentucky University
2019	Derek Collins- Western Kentucky University
2018	Andrea Ambam- Western Kentucky University
2017	Mariann Fant- Ball State University
2016	Bri Kirkham- Ball State University
2015	Jerome Gregory- Bradley University
2014	Andrew Neylon- Ball State University
2013	Jacoby Cochran- Bradley University
2012	Jacoby Cochran- Bradley University
2011	Liz Miller- Miami University
2010	James McGraw- St. Joseph’s University
2009	Dan Glaser- Ohio University
2008	Jessy Ohi- Kansas State University
2007	Kashif Powell- Morehouse College
2006	Collin McDonnell- Bradley University
2005	Brandon Wood- Illinois State University
2004	Antonio Moorehead- Arizona State University
2003	Meredith Schnug- Miami University
2002	Chris Lahna- Miami University
2001	Chris Lahna- Miami University
2000	Dan Hungerman- Miami University
1999	Amanda Hickman- Miami University
1998	Kristen Saponaro- St. Joseph’s University
1997	Heather Blair- Ohio State University

Jayne Wilson- Eastern Michigan University	1996
Jason Berke- Illinois State University	1995
Danielle Rogowski- Oakland University	1994
Robin Silbergleid- Illinois State University	1993
Ronnie Stewart- Bradley University	1992
Karon Bowers- Bradley University	1991
Stephanie Kaplan- University of Wisconsin-Madison	1990
Stephanie Kaplan- University of Wisconsin-Madison	1989
John Welk- North Central College	1988
Michael Stotts- University of Wisconsin-Madison	1987
Jim McCafferty- George Mason University	1986
Tracy Anderson- Bradley University	1985
Steve Sudhoff- Bradley University	1984
Sam Marcossou- Bradley University	1983
Brian Marsh- Illinois State University	1982
Denise Bostdorff- Bowling Green University	1981
Kathy Fig- Moorhead State University	1980
Eileen Scallen- St. Olaf College	1979
Ray Quiel- Eastern Michigan University	1978
Christine Neiditch- George Mason University	1977
Stephen Collie- Illinois State University	1976
Dot Freeman- Ball State University	1975



DUO INTERPRETATION

- 2023** Jonah Johnson and Rashon Leday
Western Kentucky University
- 2022** Rashon Leday and Reginald Jefferson
Western Kentucky University
- 2021** Derek Collins and Ryan Gosling
Western Kentucky University
- 2019** Joshua Beckles & Trijae
Bradley University
- 2018** Andrea Ambam & Lyric Davis
Western Kentucky University
- 2017** Bianca Montgomery & Abigail Onwunali
University of Texas at Austin
- 2016** Alexa Thomas & Lizzette Marrero
University of Texas at Austin
- 2015** Huy Pham & Berkley Conner
Ball State University
- 2014** Nick Gilyard & Ray Roberts
Western Kentucky University
- 2013** Robi Mahan & Mike Tristano
Illinois State University
- 2012** Jeremy Frazer & Nadine Ajaka
Ohio University

- 2011** Ethan Milspaugh & Chelsea Harman
Western Kentucky University
- 2010** Brian Galston & Angelica Davis
University of Texas at Austin
- 2009** Cornelius Lee & Ashley Litsey
Western Kentucky University
- 2008** Emambu Atabong & Elijah Misigaro
Bradley University
- 2007** Katelyn Wood & Annie Kincade
Illinois State University
- 2006** Natalie Sintek & Lydia Nelson
Western Kentucky University
- 2005** Tyler Billman & Lacy Lowrey
Bradley University
- 2004** Michael Marion & Nina Brennan
Eastern Michigan University
- 2003** Joshua Green & Leah Wessman
Miami University
- 2002** Jaime Riewerts & Joseph Raab
Bradley University

- 2001** Zachary Dempsey & Alex Paez
San Francisco State University
- 2000** Elizabeth Kenny & Robert Pieranuzi
Indiana University
- 1999** Romel Jamison & Nelsan Ellis
Illinois State University
- 1998** Rob Allen & Ryan Morris
Bradley University
- 1997** Chad Olsen & Heidi Sulzman
Arizona State University
- 1996** Chris Fleming & Adam Black
Western Kentucky University
- 1995** Lamont Vaughn & Jason Berke
Illinois State University
- 1994** Lori Funk & Ken Volpp
Bradley University
- 1993** Karl Holman & Michael Malloy
St. Joseph's University
- 1992** Stacy Nekula & Jodi Parks
Illinois State University
- 1991** Jeff Seasholtz & David Smith
Eastern Michigan University
- 1990** Carolyn West & William Colieus
Eastern Michigan University
- 1989** Sarah Braun & Jim Farruggio
Bradley University
- 1988** Kevin Spengel & Chris Mancini
Bradley University
- 1987** Ken Klawitter & Jim Skeffington
Bradley University
- 1986** Kevin Spengel & Greg Dolph
Bradley University
- 1985** Lisa Alexander & Greg Dolph
Bradley University
- 1984** Wally Gibson & Jim Wineburner
Bradley University
- 1983** Mike Jones & Darrel Copp
Eastern Michigan University

- 1982** Michael Bailey & Theresa McElwee
Eastern Michigan University
- 1981** Michael Bailey & Maureen Berke
Eastern Michigan University
- 1980** John Capecci & Theresa McElwee
Eastern Michigan University
- 1979** Maureen McDonough & Theresa McElwee
Eastern Michigan University
- 1978** Cynthia Meier & Michael Garcia
Eastern Michigan University
- 1977** Gary LaParl & Mark Hickman
Marshall University
- 1976** Stuart & Mallet
Morehouse College
- 1975** Krohn & Stephen
Ohio University
- 1974** Kendig & Beal
Ohio University
- 1973** Bohannon & Deborah
University of Southern Maine
- 1972** Tony Trimble & Don Meade
Eastern Kentucky University

DUO INTERPRETATION

LINCOLN-DOUGLAS DEBATE

- 2023 Nick Wallenburg – University of Nebraska-Lincoln
- 2022 Alex Webb – Lewis and Clark College
- 2021 Andre Swai- Western Kentucky University
- 2019 Anthony Survance - Western Kentucky University
- 2018 Colten White - University of Nebraska- Lincoln
- 2017 John Sahlman & Mark Allseits - Western Kentucky University
- 2016 Alex Glanzman- Kansas City, KS Community College
- 2015 Nefertiti Dukes- Western Kentucky University
- 2014 Spencer Orłowski- Western Kentucky University
- 2013 Susan Taylor- Western Kentucky University
- 2012 Alison Stickland- Drury University
- 2011 Sarah Spiker- Western Kentucky University
- 2010 Kaleb Jessee- Western Kentucky University
- 2009 Mike Storey- Creighton University
- 2008 Spencer Harris- Drury University



LINCOLN-DOUGLAS DEBATE

- Mike Storey- Creighton University 2007
- Nick Dudley- University of Missouri 2006
- Nick Dudley- University of Missouri 2005
- John Henderson- Creighton University 2004
- Jeremy Hollingshead- Missouri Southern University 2003
- Lindsay Marquardt- University of Pennsylvania 2002
- Colleen Karpinsky- St. Anselm's College 2001
- Sean Williams- Central Missouri State 2000
- Mike McDonner- Western Kentucky University 1999
- Mike McDonner- Western Kentucky University 1998
- Scott Smith- Ohio State University 1997
- Robert Mattingly- Western Kentucky University 1996
- Mary Cunningham- Suffolk University 1995
- Paul Higday- University of Pennsylvania 1994
- Robert Mattingly- Western Kentucky University 1993
- Cindy Weisenbeck- University of Wisconsin-Eau Claire 1992
- Kevin Minch- Wayne State University 1991

- 2023 Gavin Millard – Eastern Michigan University
- 2022 Paige Allbright – Western Kentucky University
- 2021 Cheriaca Huntley – George Mason University
- 2019 Sarah Courville- University of Texas at Austin
- 2018 Mariana Garcia- University of Texas at Austin
- 2017 Abigail Onwunali- University of Texas at Austin
- 2016 Abigail Onwunali- University of Texas at Austin
- 2015 Huy Pham- Ball State University
- 2014 Austin Groves- Western Kentucky University
- 2013 Ben Davis- North Central College
- 2012 Jasmine McLeod- California State University-Long Beach
- 2011 Elle Pratt- Bradley University
- 2010 Jerome Davis- Western Kentucky University
- 2009 Vanessa Carranza- Bradley University
- 2008 Emambu Atabong- Bradley University

DRAMATIC INTERPRETATION

PROGRAM ORAL INTERPRETATION

- Kai Solis – University of Texas at Austin 2023
- Simran Chugani – University of Minnesota 2022
- Ryan Gosling – Western Kentucky University 2021
- Trijae- Bradley University 2019
- Kirsten Bridgemen- Illinois State University 2018

EXPERIMENTAL EVENTS

- | | | |
|------|------------------------------|--|
| 2012 | Forensics Criticism | Jeremy Johnson- Ripon College |
| 2011 | Editorial Impromptu | Joshua Hiew- Northwestern University |
| 2009 | Editorial Impromptu | Stan Polit- Northwestern University |
| 2008 | Biographical Informative | Stan Polit- Northwestern University |
| 2007 | Original Shakespeare | Paul Gilleland-
University of Wisconsin- Eau Claire |
| 1999 | Dialogue Interpretation | Jill Valentine- Bradley University |
| 1995 | Argumentative Interpretation | August Benassi- Bradley University |



President
Megan Koch - Illinois State University

Past President
Karen Morris - University of Wisconsin-Eau Claire

Tournament Director
David Bowers - Missouri Valley College

Vice President for Administration
Dawn Lowry - George Mason University

Vice President for Professional Relations
Nicole Freeman - University of Central Missouri

Secretary
Julie Walker - Southwest Minnesota State University

Treasurer
Sade Barfield - University of Northern Iowa

At-Large Representative
John Stanley - North Central College

At-Large Representative
Jennifer Talbert - Ohio University

At-Large Representative
Joe Gantt - Lewis and Clark College

At-Large Representative
Trent Webb - Hofstra University

LD Representative
Justin Kirk - University of Nebraska-Lincoln

Graduate Student Representative
Hailea Stone - San Diego State University

Student Representative (Sr.)
Em Marlow - Ohio University

Student Representative (Jr.)
Prem Ganesan - George Mason University

Editor, National Forensic Journal
Justin Rudnick- Minnesota State University, Mankato

Associate Editor, National Forensic Journal
Kevin Minch - Truman State University

LINCOLN-DOUGLAS COMMITTEE

Committee Chair
Justin Kirk - University of Nebraska-Lincoln

Committee Member
Nadya Steck - Missouri Valley College

Student Representative
Eli Bartz - Truman State University

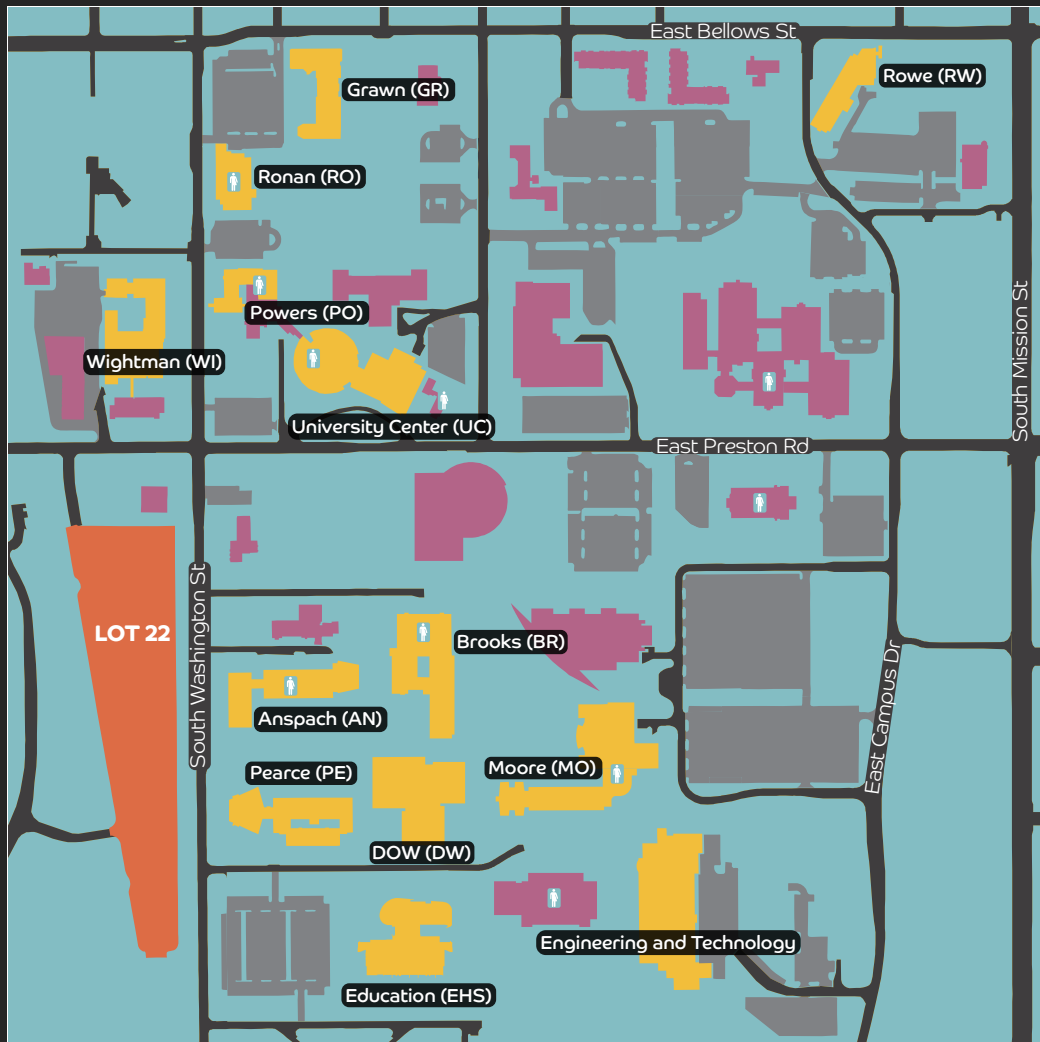
Committee Member
Shanna Carlson - Illinois State University

Committee Member
Craig Hennigan - University of Nevada Las Vegas



CAMPUS MAP

CENTRAL MICHIGAN UNIVERSITY



- Tournament Buildings
- Other Campus Buildings
- Tournament Parking Thursday, Friday, Monday
- Additional Parking Available Saturday and Sunday
- ♂
♀ Gender Inclusive Restrooms

Gender Neutral Restrooms

- Anspach Hall:** Ground floor near room 047 and elevators.
- Biosciences Building:** Floors 1, 2 and 3 near elevators.
- Bovee University Center:** Ground floor near room 124, across from One Central.
- Brooks Hall:** Between rooms 137 and 138.
- Foust Hall:** First floor next to room 101.
- Health Professions Building:** First floor near room 1036 and second floor near room 2059.
- Powers Hall:** First floor near elevators and room 106, second floor between rooms 242 and 244.
- Ronan Hall:** Second floor near room 290, third floor across from room 345.
- Moore Hall:** First floor near Bush Theatre room 141 and near TV and Radio Stations room 194.
- University Art Gallery:** Inside main entrance -Tuesday -Friday 11:00-6:00, Saturday 11:00- 3:00.

Large Group Study Spaces

- Anspach Hall:** Student study space/lounge on first floor room 189.
- Biosciences:** Student study spaces on all four floors.
- Bovee University Center:** Multiple student study spaces on ground floor and first floor.
- Education and Human Services Building:** Student study spaces on floors, 2, 3 and, 4.
- Engineering and Technology Building:** Student study space on first floor.
- Grawn Hall:** In atrium on first and second floors, second floor near room 250.
- Health Professions:** Multiple student study spaces on first floor, second floor near room 2021.
- Pierce Hall:** Student collaboration space in room 135.
- Powers Hall:** Student study space in main first floor lobby.

Coffee

- | | | |
|--|--|--|
| Einstein Bros. Bagels
EHS Building
989-774-6406 | Starbucks
5655 E. Pickard St.Mt.
989-773-2457 | Biggby Coffee
4445 E. Blue Grass Rd
989-773-3800 |
| Ponder Coffee
1027 S. Franklin St.
989-317-0808 | Creation Coffee
914 E. Pickard St.
989-317-0860 | Big Apple Bagels
2024 S. Mission St. |
| Ponder Coffee
CMU Library
989-317-0808 | Tim Horton's
1004 E. Pickard St.
989-779-0920 | Ignite Doughnuts
2208 S. Mission St.
989-865-0986 |
| Ponder Coffee
Health Professions
989-317-0808 | Cops & Doughnuts
1327 S. Mission St.
989-546-7666 | Panera
2111 S. Mission
989-772-0003 |
| Starbucks
University Center
989-774-4313 | Biggby Coffee
210 S. Mission St.
989-779-0373 | Starbucks (Inside Target)
4097 E. Blue Grass Rd.
989-773-0218 |
| | Pleasant City Coffee
205 W. Broadway
989-339-1649 | Max & Emily's Bakery Cafe
125 E. Broadway
989-772-7560 |



AFTER DINNER

IMPROMPTU

LINCOLN-DOUGLAS

PERSUASION

DRAMATIC

DUO DRAMATIC

EXTEMPORANEOUS

RHETORICAL

PROSE

INFORMATIVE

POETRY

PROGRAM